



# Sauer-Information

Mitteilung-Nummer:

**0060/2N**

Inhalt:

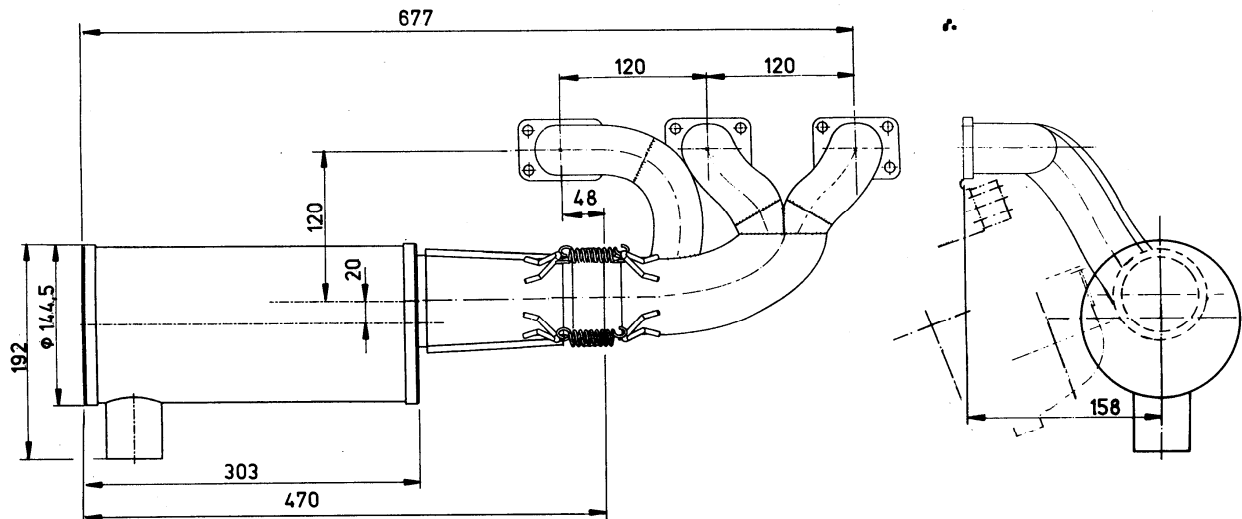
**Exhaust system over view S950R100**  
(3-cylinder engine)

Datum:

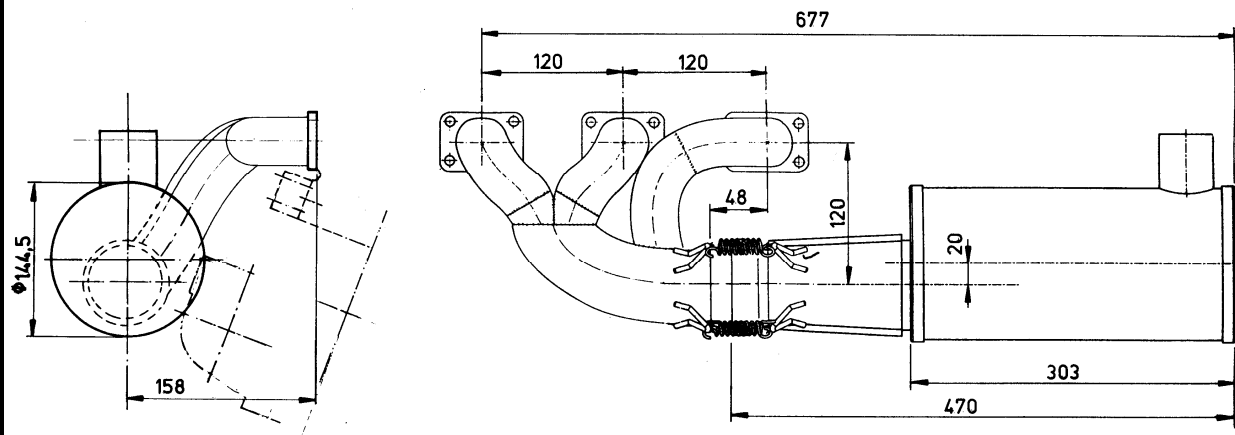
09.09.2009

## Basic version:

### Version 1a (straight version):



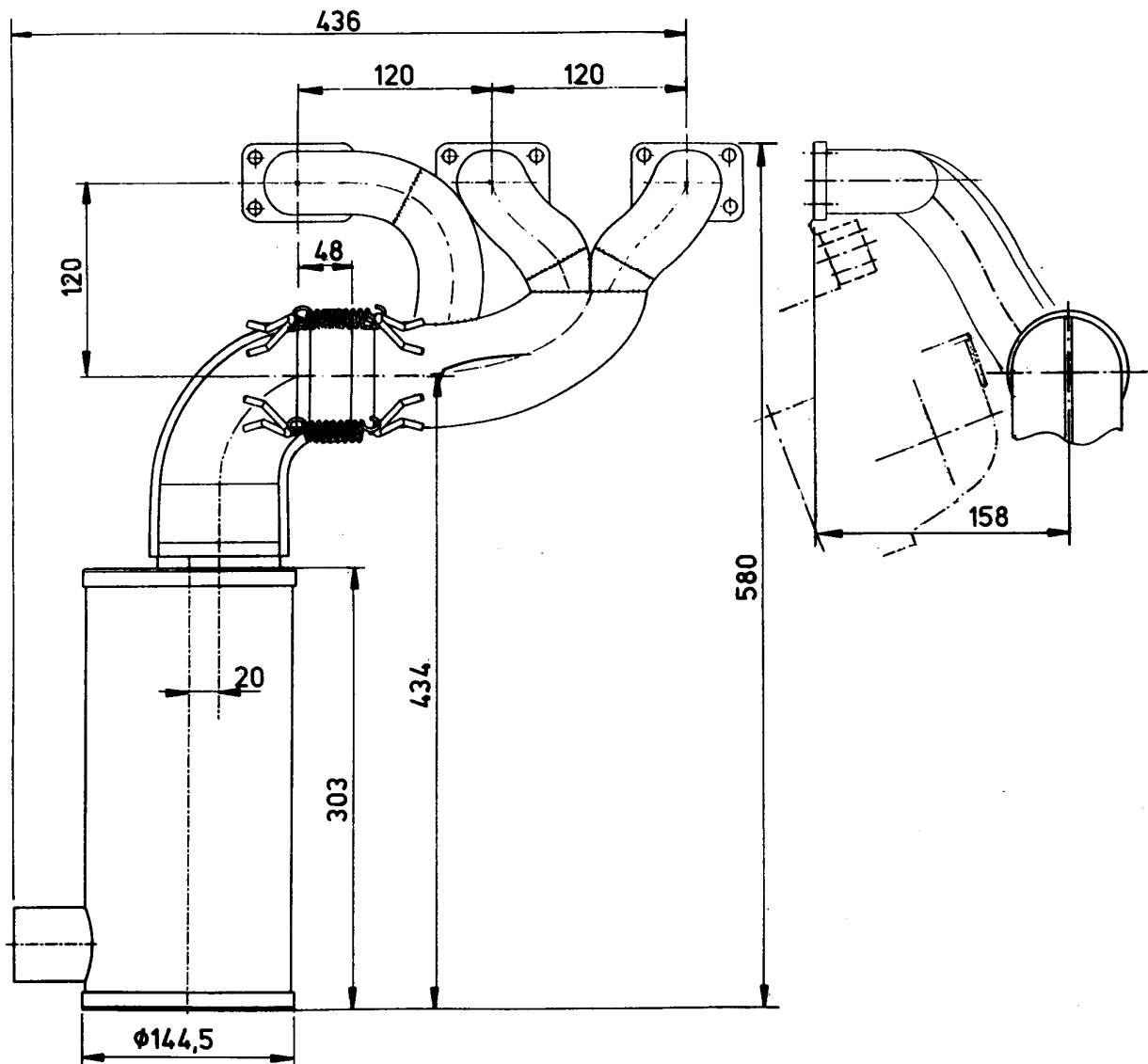
### Version 1b (straight version):



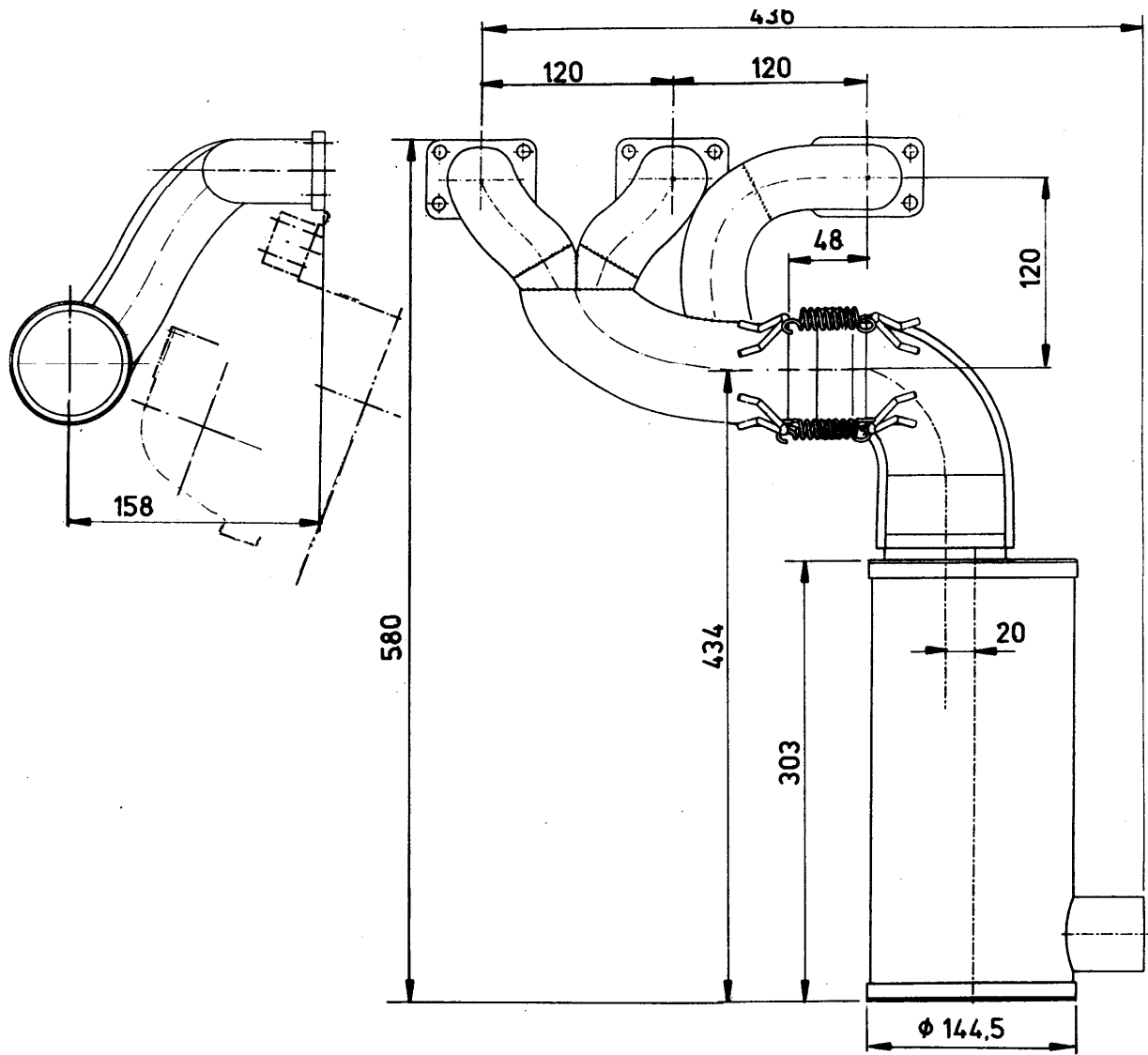
### Note:

the difference between version 1a and 1b are the outlet manifolds 378A2U und 378C2U being positioned in opposite.

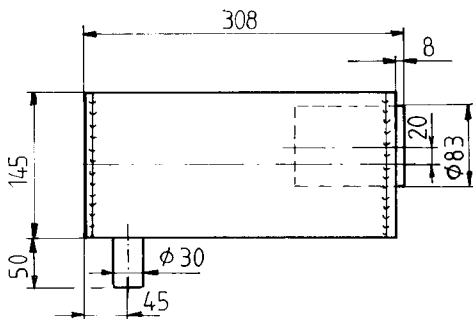
Version 2a (90° version):



**Version 2b (straight version):**

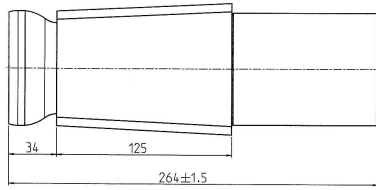


**378 T4U Muffler, complete**

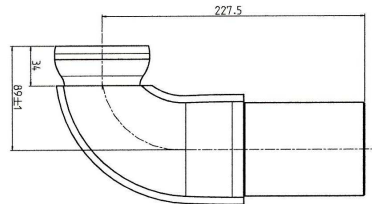


**Weight: 3,2kg**

**378 A13U inlet pipe, complete  
weight: 1,5 kg**



**378 A15U bow 90°, complete  
weight: 1,4 kg**



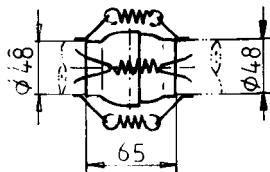
**F308 A4 loop**



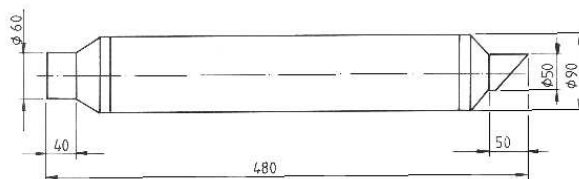
**54.1 spring**



**378 A4U ball bearing  
weight: 0,26 kg**



**018.10/30 rear silencer  
weight: 1,1 kg**



**exhaust system basic versions in correspondence to engine model:**

**S950R (74kW (100hp)-version):**

	<b>Var. 1a</b>	<b>1x</b>	<b>378 A2U</b>	<b>outlet manifold (left)</b>	
		<b>1x</b>	<b>378 A13U</b>	<b>inlet pipe (straight)</b>	<b>l = 0 mm</b>
		<b>1x</b>	<b>378 T4U</b>	<b>exhaust muffler, complete</b>	
<b>or</b>	<b>Var. 1b</b>	<b>1x</b>	<b>378 C2U</b>	<b>outlet manifold (right)</b>	
		<b>1x</b>	<b>378 A13U</b>	<b>inlet pipe (straight)</b>	<b>l = 0 mm</b>
		<b>1x</b>	<b>378 T4U</b>	<b>exhaust muffler, complete</b>	
<b>or</b>	<b>Var. 2a</b>	<b>1x</b>	<b>378 A2U</b>	<b>outlet manifold (left)</b>	
		<b>1x</b>	<b>378 A15U</b>	<b>bow (90°)</b>	<b>l = 0 mm</b>
		<b>1x</b>	<b>378 T4U</b>	<b>exhaust muffler, complete</b>	
<b>or</b>	<b>Var. 2b</b>	<b>1x</b>	<b>378 C2U</b>	<b>outlet manifold (right)</b>	
		<b>1x</b>	<b>378 A15U</b>	<b>bow 90°</b>	<b>l = 0 mm</b>
		<b>1x</b>	<b>378 T4U</b>	<b>exhaust muffler, complete</b>	

**Please note that the claimed performance of engine can't be guaranteed if an exhaust system is used which is differing to one of the 2 basic versions (see page 1). Resulting from any modifications or changes of the exhaust system the engine might be damaged and in this case we are not obliged for any warranty or guarantee.**

**The length l = 0 mm stated for the engine S950R (74 kW / 100 hp) means that the cone pipe (378A13U or 378A15U) is completely slipped in into the muffler (378T4U). The lengths differing from null refer to the spaces stated as "l" in the sketches.**